



Annual Report 2009

Dear Friends:

Last year was a very difficult year for thousands of our Pierce County neighbors. Thanks to your generosity, through our seven FISH Food Bank locations, we provided nutritious food to 313,776 individuals; a 34 percent increase over 2008. With your support—whether you volunteered, donated food or contributed money—we served more individuals than ever before! Thank you for helping your neighbors in need.

We worked hard to be good stewards of your donations. Last year for every \$1.00 that was donated we distributed \$7.00 worth of food. We were able to stretch our dollars further by purchasing in bulk, purchasing at the lowest price possible, and making the best use of the tremendous increase in food donations.

I would like to share with you some ways your donations were put to use:

- ◆ 313,776 individuals in need were served enough food to make 2,823,984 nutritious meals.
- ◆ Our food banks received more than 3,163,934 pounds of food donations from individuals, schools, churches, local grocery stores, Northwest Harvest and the Emergency Food Network.
- ◆ Over 650 volunteers worked tirelessly to operate the food banks, to pick up donated food and deliver food to individuals who needed extra assistance. Their 85,000+ volunteer hours provided the equivalent of nearly 41 full-time staff.
- ◆ We purchased over \$380,000 worth of nutritious food from suppliers who provide the lowest cost possible.
- ◆ The Graham/South Hill location was remodeled to become a “self serve” food bank, with expanded hours of operation.
- ◆ We hired a part-time food bank coordinator for the Lakes Area FISH Food Bank and converted the food bank to the “self serve” model.
- ◆ We formed a strong collaboration with South Sound Outreach Services to set up “Connection Centers” in the Edgewood and Graham/South Hill food bank locations. These centers provide assistance with food stamp registration, rental, mortgage and utility assistance and financial literacy.

We are extremely grateful to every individual, place of worship, foundation, business, school, organization and government entity that supports the work of FISH Food Banks of Pierce County.

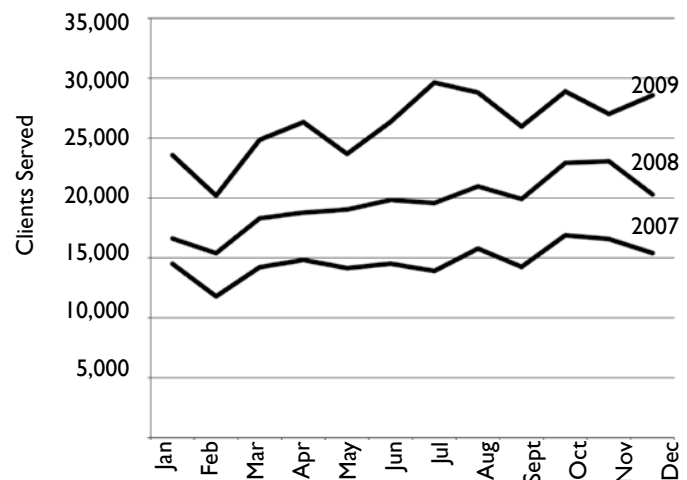
Thanks to your support we were able to serve an increasing number of individuals in need with compassion, dignity and respect.

Warmest regards,

Beth

Beth Elliott
Executive Director

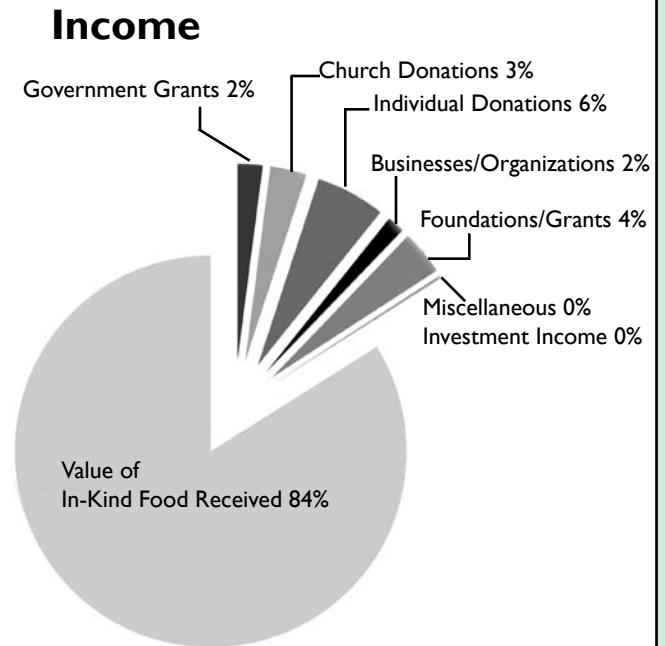
2007-2009 FISH Food Bank Usage



FISH Food Banks of Pierce County 2009 Operating Revenue & Expenses

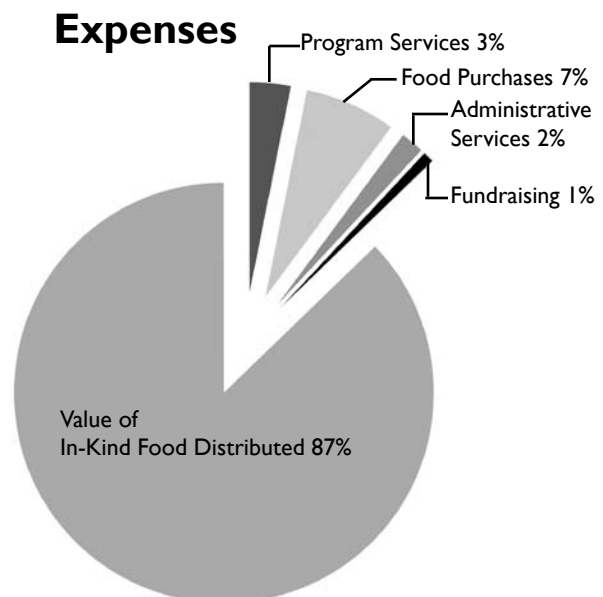
2009 Income

Government Grants	\$116,159
Church Donations	\$169,146
Individual Donations	\$322,260
Businesses/Organizations	\$81,577
Foundations	\$206,099
Miscellaneous	\$126
Investment Income	\$12,526
Value of In-Kind Food Received	\$4,745,900
Total	\$5,653,793



2009 Expenses

Program Services	\$171,635
Food Purchases	\$380,601
Administrative Services	\$97,217
Fundraising	\$45,843
Value of In-Kind Food Distributed	\$4,745,900
Total	\$5,441,196



Net Ordinary Income	\$212,597
Designated for Food Purchases	\$154,000
Contribution to Reserve	\$58,597

SPECIAL THANKS TO OUR 2009 BOARD OF DIRECTORS:

Sandy Roszman, President • Dee Ebsen, Vice President •

Sue Sauders, Secretary/Treasurer •

Bob Battles • Jerry Lee Jr. • Bill Martyn • Mike Mowat • Beth Nichols • Barbara Reed

Meetings of the Board of Directors of FISH Food Banks of Pierce County
are the third Thursday of each month from 4:30-6:00 p.m.

Meeting location rotates; call for location.